

**What will  
500,000 truck  
loads of mud  
do to our  
local Island  
waters?**

# **MAGNETIC ISLAND COULD BECOME MUD ISLAND**

**NOW IS THE TIME TO SAY "NO" TO BOTH THE QUEENSLAND AND  
AUSTRALIAN GOVERNMENT ABOUT TOWNSVILLE PORT'S EXPANSION PLANS**

## **DREDGING IS FOREVER**

**Have Your  
Say Before  
13th & 27th  
May**

**HALF A MILLION TRUCK LOADS OF MUD (5.6 MILLION CUBIC METRES) ARE TO BE DUMPED JUST 6KM  
UPCURRENT FROM FLORENCE, ARTHUR & ALMA BAYS - SOME OF MAGNETIC ISLAND'S FINEST BEACHES -  
IF TOWNSVILLE PORT'S EXPANSION GOES AHEAD!**

As islanders we know what dredge spoil mud looks like. It ruins visibility and suffocates corals and other marine life. Now, the dredged silt from the shipping channel is going to be 10 times more than previously dumped in any of the dredgings from over the last 30 years!

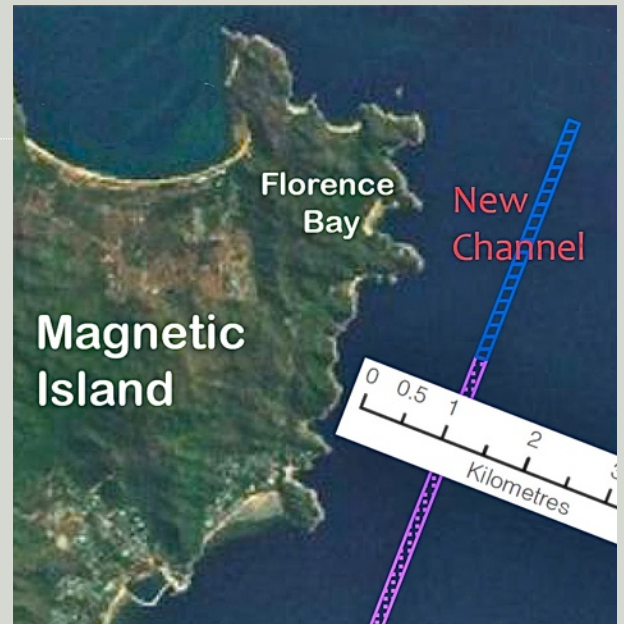
The plans include deepening and lengthening the sea channel by nearly 3 kms for very big vessels and for twice the number of ships as at present. This dredging area is much closer to the Island than the dumping area - just 1500m from Florence Bay!

### **WHO WILL WANT TO VISIT MAGNETIC MUD ISLAND?**

Because so much of the ongoing maintenance dredging releases mud to drift and discolour the water, divers, anglers, sailors, marine scientists, swimmers and, of course, our thousands of visitors, can see the mess it makes.

We know that our fish nurseries, turtles, dugongs, snub-nosed dolphins, corals and sea grass beds have all been under great stress from increased sediment and toxins from land run-off. But if our waters are regularly stirred up by the Port's expansion - forever into the future - what hope is there for our marine animals and plants and the beauty that draws so many people to Magnetic Island?

The consultants have produced a huge document to show how to minimise the mess. But, when they are hired by the Port, can we really trust the results?



**Right now the Environmental Impact Statement (EIS) for this massive project is open for public comment.**

**Just a short letter or email from you to the Queensland & Australian governments and politicians, voicing your concerns for Magnetic Island could make all the difference. The more they see the bigger the impact!**

## IS THIS ABOUT MAKING THE PORT MORE VALUABLE BEFORE IT GETS SOLD?

Right now the Queensland Government is looking to sell off more and more of our publicly owned assets - including the Port. Getting the approvals in place to add millions of cubic metres of mud to our waters will no doubt help get a better price. But who benefits? Will it be Magnetic Island's beaches, marine life, fishing, tour operators and the island's tourist accommodation businesses which already struggle to survive? We don't think so!

So, do we roll over and let this be done without a fight?

We believe this is a make or break moment for Magnetic Island's environment and economy and it's time to make some noise. We urge you to start by writing emails and letters and not to get put off because you're not an expert. We all have a right to tell them we just don't want their mud and, below, there is information to help you do this.

## IDEAS & QUESTIONS FOR YOUR LETTERS & EMAILS

\*Dredging has to be regularly maintained forever to make the Port accessible. As the mud is repeatedly stirred it smothers and causes chronic stress on corals.

\*Dredging is much more serious and long lasting than occasional big impact events like cyclones and bleaching.

\*Cleveland Bay is World Heritage. Is this how we should treat it and can we expect this high status into the future?

\*The plan could spell the end for the island's present marine environment, recreational fishing and tourism industry.

\*Dumping mud at sea is cheap and destructive, with the mud frequently stirred up in windy weather.

\*The Port has been operating over the last 6 years at only 39% of its current capacity. Do we really need the expansion?

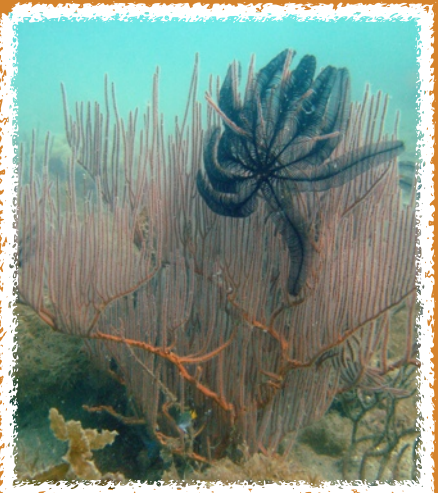
\*Many large ships using the channel already stir up lots of mud. If the forecasts for double the usage occur, much more mud will be stirred up. How many more turtle and dugong strikes will there be?

\*The channel is very close to Magnetic Island and making it deeper, wider and longer is very likely to make our beaches muddier more often.

\*The EIS calls for the use of a 'green valve' to release mud from the dredge while it operates. But this doesn't change the amount of mud it will release, it just means it will be released beneath the sea's surface so we won't see so much of it.

\*Much of the proposed Port expansion would be so that Townsville could join Abbot Point and Gladstone in exporting coal. Is that our vision?

## GONE FOREVER?



MARINE LIFE FROM  
MAGNETIC ISLAND

For more info & support  
to make sure your message  
fits with requirements of the  
different government bodies  
+ links to the Townsville Port  
Expansion Project EIS, visit:

**www.minca.org**

## DEADLINES & CONTACT DETAILS

### Queensland Government

**Email:**

TPE@coordinatorgeneral.qld.gov.au

**Post:** The Co-ordinator General

C/- EIS Project Manager

Townsville Port Expansion Project

Coordinated Project Delivery

Office of the Co-ordinator General

PO Box 15517, City East

QLD 4002 Australia

**Fax:** (07) 3225 8282

### Australian Government

**Email:** EIS@townsville-port.com.au

**Post:** Port of Townsville Limited

C/- Environmental Project Manager

Townsville Port Expansion Project

PO Box 1031

Townsville QLD 4810 Australia

**Fax:** (07) 4781 1525

Responses to the Australian Government  
need to relate to Matters of National  
Environmental Significance.

See [www.minca.org](http://www.minca.org) for details

### WE STRONGLY RECOMMEND YOU ALSO WRITE TO THE GREAT BARRIER REEF MARINE PARK AUTHORITY

Tell them NOT to grant a permit to allow the  
proposed sea dumping of the dredge spoil.

**Email:** [info@gbrrmpa.gov.au](mailto:info@gbrrmpa.gov.au)

**Post:** GBRMPA, Townsville Head Office  
PO Box 1379 Townsville QLD 4810

**Fax:** (07) 4772 6093

Also write to: The Hon Campbell Newman,  
Premier of Queensland

**Email:** [Premier@ministerial.qld.gov.au](mailto:Premier@ministerial.qld.gov.au)

Member for Townsville, John Hathaway MP

**Email:** [townsville@parliament.qld.gov.au](mailto:townsville@parliament.qld.gov.au)

Member for Herbert, Ewen Jones MP

**Email:** [ewen.jones.mp@aph.gov.au](mailto:ewen.jones.mp@aph.gov.au)

**5PM MONDAY 13TH MAY**

**5PM MONDAY 27TH MAY**

**5PM MONDAY 27TH MAY**