

Welcome to World Heritage Magnetic Island (Yunbenun)



There is no other island in the Great Barrier Reef World Heritage Area like Magnetic Island. It isn't just sensationally beautiful, it's one of the three most ecologically diverse islands in the whole World Heritage Area, and the most accessible.

The coral gardens of its fringing reefs support a quarter of all hard coral species found on the Reef, and its surrounding waters are a haven for turtles, dugongs, rays, whales, sharks, and even the rare snub fin dolphin.

Today we humans are sharing this precious place in ever greater numbers so we all need to treat "Maggie" with extra care and respect, so future generations can enjoy it as well.

Islands like Magnetic Island are havens - arks for species threatened on the mainland by feral animals.

You too can help maintain the Island's great beauty and play a special role in keeping our native animals and plants safe.



Here are some suggestions to help you enjoy your visit and know you are helping to care for Magnetic Island at the same time.

IN THE SEA

Please respect the **no fishing** Marine Park Green Zones - we'd have fewer fish without them. If you're fishing in the other bays, remember to retrieve any broken fishing gear, bait bags or lines so they won't injure or kill other wildlife. **NB: FINES of \$2,200 apply to anyone fishing in Green Zones.**

Coral is easily damaged, so please take care. If you're boating, use the moorings provided, or look for sand to anchor on. If you're swimming please don't stand on the coral.

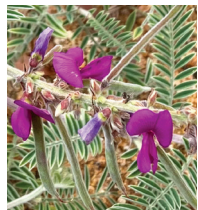


RUBBISH

Please pick up any rubbish you see, especially plastic on beaches or in creeks, before it chokes our marine animals.

FIRES

Please respect our native plants, they are the foundation of our Island's food chain. Even dead they provide shelter and habitat. Firewood collection including driftwood, is not permitted in the National Park or on any other public land.



Enjoy the night sky without the glare of a fire. You may even see a meteor! Fires can have a catastrophic impact on our Island's plants and animals if they get out of control. Report fires to 000.

CAMPING

Sorry, camping on beaches and natural areas is not permitted anywhere on Magnetic Island. With new visitors arriving every day, the impact of litter and human waste that comes with camping is just too much for the Island's fragile environment.

WALKING

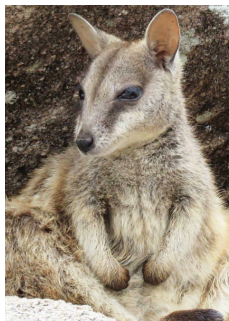
The Island has many walking tracks, both into the hills, and between the bays, so getting around is easy. The main tracks are shown on the map. Carry water and protect yourself from the sun. Tap water is safe to drink, or fill your bottle where you see this sign.



DRIVING

Please take care driving - especially at night when some animals are most active. They use the road too!

Koalas, wallabies, snakes, echidnas and ground-living birds like curlews are all vulnerable. Hitting an animal can be deadly for the animal, and traumatic for the driver and passengers.



The speed limit on the Island is 50kph unless otherwise signposted. The West Point Road has a 40kph speed limit. Slower speeds protect our wildlife and contribute to a relaxed island feel.

Vehicles are not allowed on any of our beaches. Their weight crushes the tiny animals in the sand. Beaches are ecosystems too! You might get sand-bogged, and even worse, lose your car at high tide.

Google Maps can be wrong! Some roads and tracks it shows don't actually exist or are private. Please don't drive where it's clearly not appropriate.

REPORT INJURED WILDLIFE

If you see any injured or distressed wildlife, please call one of our wildlife services. Many visitors have done this and saved lives of injured wildlife:

Magnetic Island Fauna Care Org.: 0457 634 732

Wallaby Refuge: 0400 243 842

Magnetic Island Koala Hospital: 0428 785 488

Marine Strandings: 1300 130 372



GIVE THEM ROOM, USE YOUR ZOOM!

Close-ups and selfies stress koalas and disturb wildlife much more than it can appear. It has caused mother koalas to abandon their joeys. The Magnetic Island Koala Hospital recommends giving koalas **at least 2 metres of respectful space.**

FEEDING BIRDS

Part of the Island's World Heritage status relates to the glorious birds that live here. There's plenty of natural food, and feeding them, (delightful as it is to see them up close), causes problems.

Human food can make them sick or artificially boost particular species like seagulls and white cockatoos. Seagulls are aggressive towards our other shore birds and too many cockatoos push other birds and animals out of scarce and precious nesting hollows.

DOGS

Dogs are not permitted in the Magnetic Island National Park unless they are certified support dogs.

Dogs off-leash are not permitted by Townsville City Council in any public areas on Magnetic Island, including beaches.

The island is a resting and feeding stopover for tired and hungry migrating birds and they rely on a narrow tidal window for feeding on beaches and tidal flats. So please keep your pet on a leash and give these wonderful visitors, nesting turtles and other wildlife a little space. They surely deserve it.

The Wulgurukaba are the traditional custodians of Yunbenun and have continuing connection to its lands and waters.



MORE INFORMATION

Magnetic Island's natural values visit:

minca.org
arcadiacoastcare.com.au

Magnetic Island's history visit:

Magnetic Museum, Granite Street, Picnic Bay.

Queensland Parks and Wildlife Services

parks.des.qld.gov.au/parks/magnetic-island



Great Barrier
Reef Foundation

This project is funded by the partnership between the Australian Government's Reef Trust and the Great Barrier Reef Foundation.



**Magnetic Island
Nature Care
Association Inc.**



minca.org

Front cover Arthur Bay image by David Peart. "In the sea" photos by Lawrence Scheele.